

BACKUP DATA MIGRATION TO COMMVAULT METALLIC RECOVERY RESERVE

FREE
Proof of Concept

Over a decade delivering data management and migration services to commercial and government agencies. Our business can mobilize the right people, skills and technologies to help organizations improve their performance.

GEN3i Migration Services (GMS) in conjunction with **Commvault** and **Metallic** offers a complete tape to cloud solution utilizing your current Commvault Complete data protection environment. This solution can liberate and migrate your tape data that resides on legacy tape formats where the backup vendor and/or the tape drive format is no longer available in your environment.



+1-855-554-3634



info@gen3iservices.com



www.gen3i.com

COMMVAULT COMPLETE DATA TO METALLIC RECOVERY RESERVE

GMS tape libraries and a Commvault Media Server will be added to the present Commvault environment where the Commvault Commserve Server has the tapes cataloged. Data from the legacy tapes will be restored to the new media server where it is compared against the existing deduplication database. The deduplicated data is then written to Metallic Recovery Reserve and the Commvault catalog is updated with the cloud location. The GMS media server will then be virtualized and placed on-prem or in the cloud for retrieval needs.

LEGACY BACKUP VENDOR TO METALLIC RECOVERY RESERVE

The configuration is the same as Commvault Complete Data to Metallic Recovery Reserve, except GMS utilizes proprietary software that can read any legacy backup vendor/version dataset on tape. This software will reside on the GMS Guru server and restores will reside locally on the server. Commvault Complete, utilizing a customer or GMS provided media server, will backup this liberated data, deduplicate against the global deduplication database and then write directly to Metallic Recovery Reserve. The GMS media server will then be virtualized and placed on-prem or in the cloud for retrieval needs.

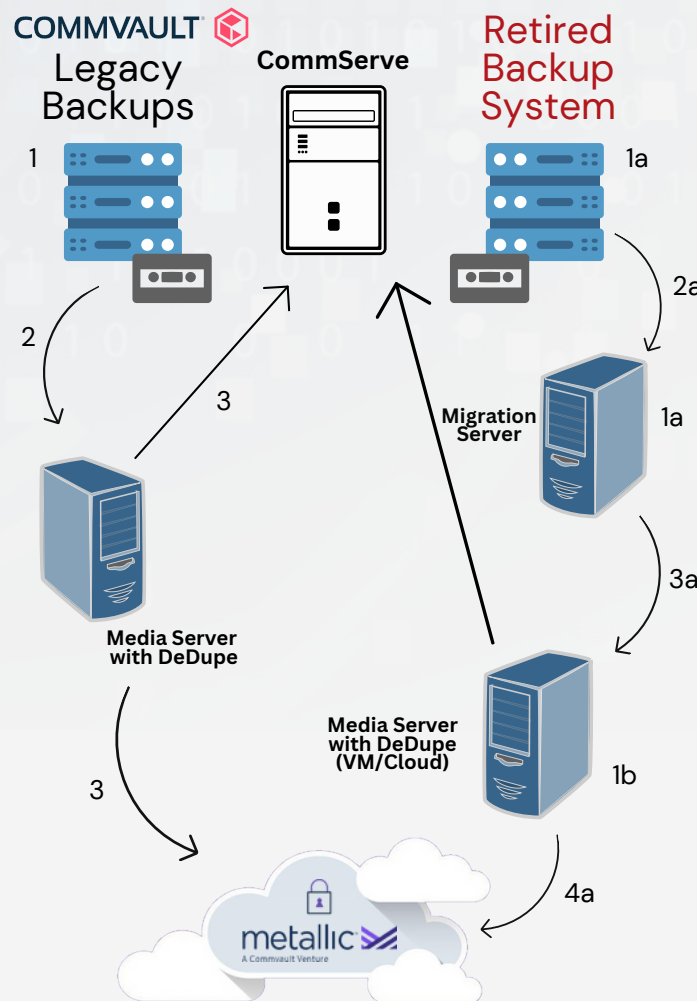
BACKUP DATA MIGRATION TO METALLIC RECOVERY RESERVE

Commvault Tape to Metallic Recovery Reserve

- 1 - Utilize customer owned or GMS provided tape library
- 2 - Migration from tape to a local or GMS provided media server for deduplication
- 3 - Deduplicated data is sent off to Metallic Recovery Reserve and the Server is updated

Contact us today for a complimentary POC

FREE



Legacy Backup Vendor to Metallic Recovery Reserve

- 1a - Utilize GMS library, GURU server, and proprietary software
- 1b - A VM or Cloud based media server will be added to the Commvault environment
- 2a - GMS restores legacy backup vendor data to GMS GURU server
- 3a - Commvault will back up the restored legacy data from the GURU server and dedupe on the VM/Cloud based media server
- 4a - Deduplicated data is sent off to Metallic Recovery Reserve and the Commserve Server is updated



+1-855-554-3634



info@gen3iservices.com



www.gen3i.com